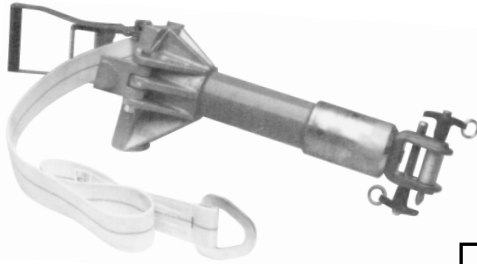




Tooling solutions for the power utility industry.

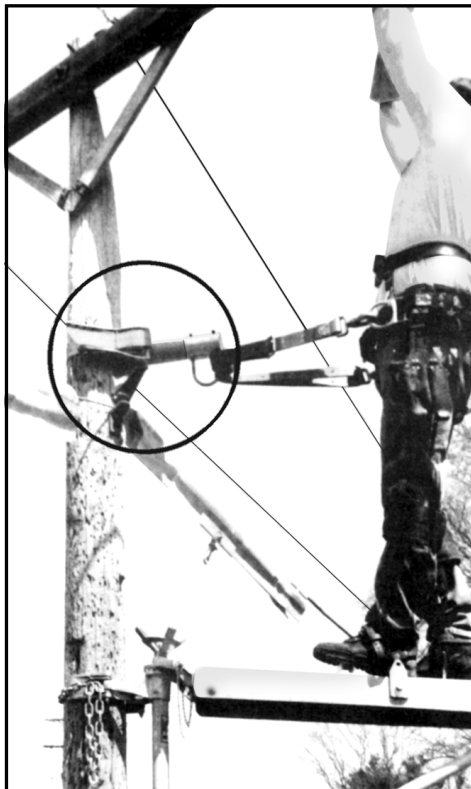
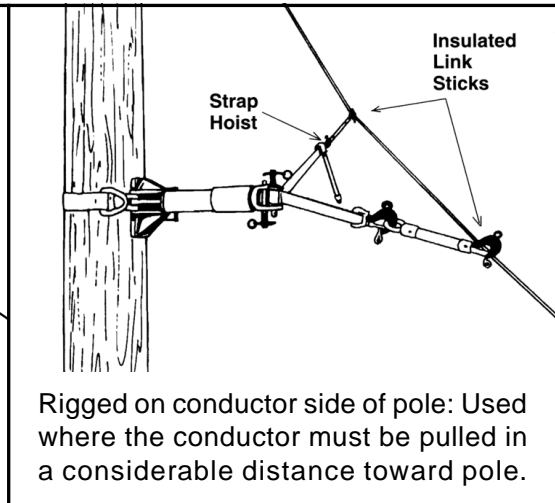
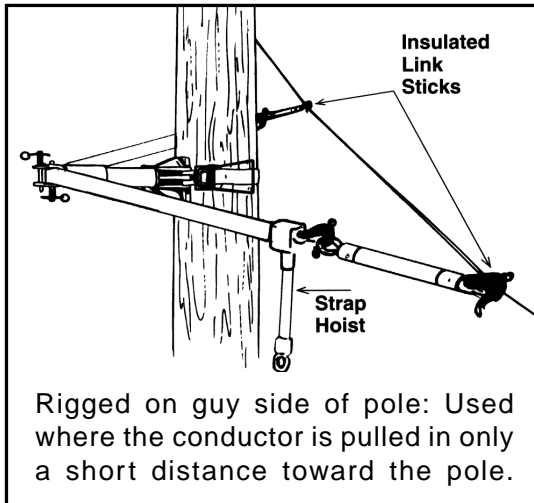


CORNER RESTRAINT BRACKET TOOL

For energized changeout of insulators on distribution running-corner poles, this tool adds efficiency. In combination with a strap hoist, the Corner Restraint Bracket Tool helps control each phase conductor while insulators are changed.

Maximum Load: 2,000 lb.
Epoxiglas® member: 2-1/2" dia., 6" clear length

PART	DESCRIPTION	WT.
T400-2272	Corner Restraint Bracket Tool	13-3/4 lb.



FALL RESTRAINT/ANCHOR TOOL

A 2-1/2" O.D. fiberglass tube provides isolation from potential differences. The Anchor Tool has been tensile tested to over 5,000 lbs. to meet OSHA requirements for Fall Restraint.

Insulation/isolation distance from metal base to large "U" bolt is 6". The 2-1/2" O.D. fiberglass tube is tested per OSHA and ASTM F-711. The tube has a solid foam core.

The Fall Restraint Tool can be used to secure a linemen's safety belt in conjunction with fiberglass platform boards or with a retractable safety lanyard to maintain isolation from pole potential.

Large "U" bolt allows safety belt to be single or doubled up to help positioning of the lineman.

A ratchet assembly with nylon strap 44" long is provided to easily attach the unit to poles.

PART	DESCRIPTION	WT.
3861	Fall Restraint/Anchor Tool	10 lb.
5042	Repl. Nylon Strap 44" long	.3 lb.