



**OVERHEAD DISTRIBUTION
GROUNDING SET WITH
PRESSURE-TYPE TERMINALS**

This complete set of ground clamps, cable, and accessories gives all of the equipment needed for many types of distribution structures in one easy to use kit. The jumper terminals are factory crimped to the grounding cable.

The kit comes with ten C600-2276 clamps so that it can be used on conductors ranging from #8 to 1033 kcmil ACSR.

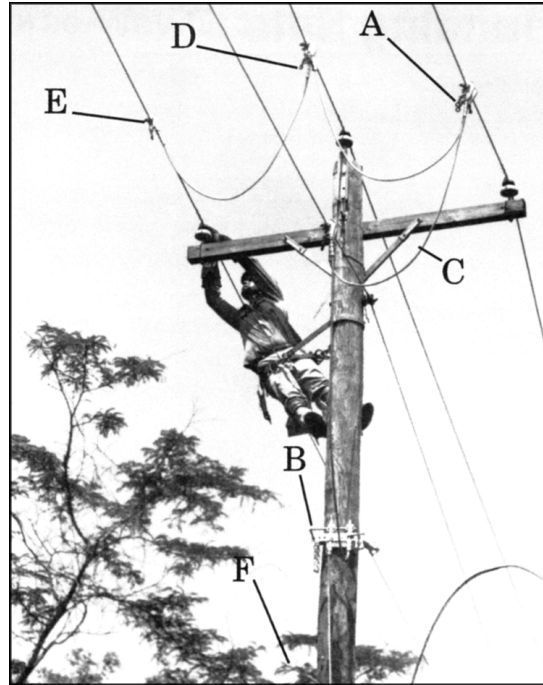
This kit was designed for use on the following types of structures:

7.2/12.5 kV A1 through C24

14.4/24.9 kV VA1 through VC9-3

46 kV TP1 through TP5

69 kV TS1 through TS3-2



The table below lists the various components completely assembled in the Distribution Grounding Set. (See diagram above for application)

T600-0641 - Overhead Distribution Grounding Set* consists of:

Item	Description	Quantity	Information
A	Serrated jaw, "C" Clamp No. C600-2276	10	For Plain Plug Terminals
B	Ground Cluster Support	1	T600-1549
C	#2 Copper Ground Cable No. 6499	60 ft.	3 Cables 6 ft. long 1 Cable 12 ft. long 1 Cable 30 ft. long
D	#2 Plain Plug Ferrules	10	Cat. No. C600-2626
E	Clamp Support Stud	3	Cat. No. G3626
F	Screw Ground Rod	1	Cat. No. G3370

CLUSTER SUPPORT, 1-TERMINAL TYPE

Conveniently hangs grounding sets on the pole to facilitate lifting clamps - one at a time to the conductors. Accepts plain ferrules on #2 to 4/0 grounding cable. Copper bar length is 11".

Part	Description	Weight
C600-0152	Ground Cluster Support	9-1/2 lb.

