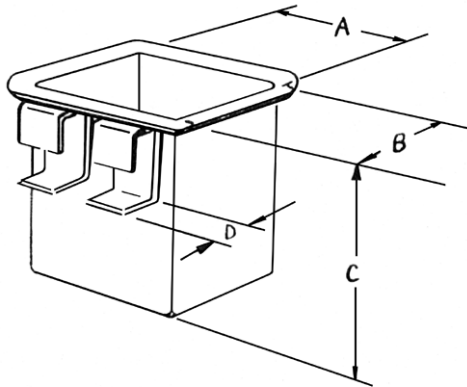




*Tooling solutions for the power utility industry.*

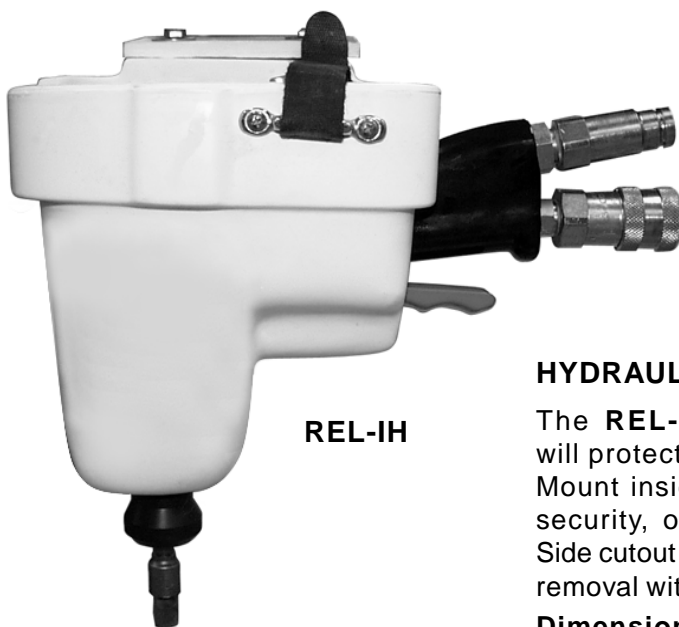


**PTI - TOOL TRAYS**

These trays are designed to provide safe and convenient storage space for tools and meters on virtually any lift basket with or without a liner. These baskets are constructed from rugged high density polyethylene with UV protection added. They are resistant to cold and impervious to motor oil, hydraulic oil, and a broad range of chemicals.

Part	Description	A	B	C	D	lbs.
1TB	Shallow Tool Tray/Fits SAM line Meters	19	8	8	2.5	7
1TB-S	Tool Tray with "S" hooks	19	8	8	-	7
1TB-W	White Shallow Tool Tray	19	8	8	2.5	7
2TB	Double Tool Tray	20	14	8	2.5	-
3TB	Shallow Tool Tray for Mounting Inside Bucket	19	8	8	-	7
5DTB	Deep Tool Tray	15	7	17	2.5	9
7DTB	Tool Tray (fits Wavetek and Avantec)	14.25	9.25	17.75	2.5	10
8DTB	Tool Tray	15	10	8.5	2.5	10
WMTB	Tool Tray/Table	15	10	13	2.5	10
1TB-SA	Tool Tray with ABH-4 hooks	19	8	8	-	7
NSK-6	Permanent non-conductive fasteners	(Set of 6)				

Soft cover available for select models in Yellow, Orange, or White.  
Any tool tray may be ordered with a divider. Custom colors available.



**REL-IH**



Adjustable bracket fits up to a 3" lip.

**HYDRAULIC IMPACT DRILL HOLSTER**

The REL-IH fiberglass impact holster will protect your hydraulic impact wrench. Mount inside or outside of the bucket for security, organization, and convenience. Side cutout allows quick, easy tool placement removal with or without a drill bit and chuck.

**Dimensions:** 8-1/2"H x 8"L x 7"W

**TO ORDER CALL: 800-966-3530 OR FAX: 215-357-9193**