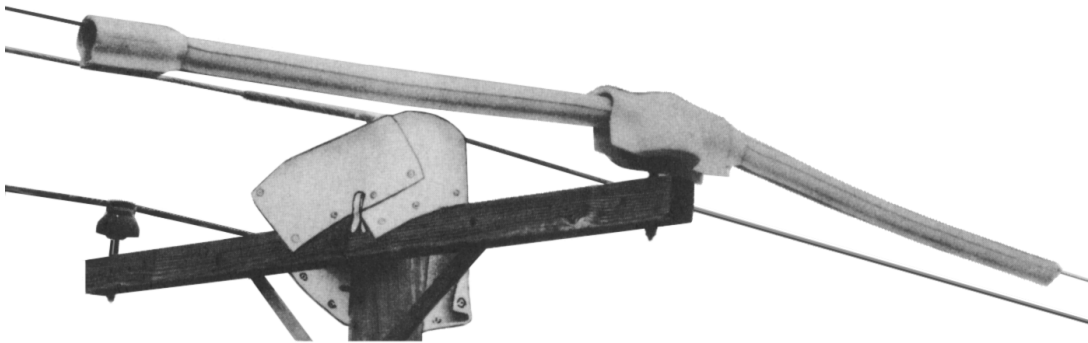




*Tooling solutions for the power utility industry.*



## RIB-GRIP<sup>®</sup> LOCKING SYSTEM

**SALCOR<sup>®</sup>** Line Hose remains flexible even in cold weather. It is not damaged by Ozone or ultra-violet rays. Available in 1.0" and 1.25" I.D. rated at 20kV (Class 2) and 1.5" I.D. rated at 30kV (Class 3) in either Straight or Connector End Style. Conventional Line Hose should be installed with the use of rubber gloves and sleeves; on voltages above 5kV, an insulated aerial device or platform should be used. The ASTM specifications on maximum use voltages should always be checked to insure the proper class equipment is being used for the system voltage being worked.

### RIB-GRIP<sup>®</sup> LINE HOSE



### CONNECTOR END LINE HOSE

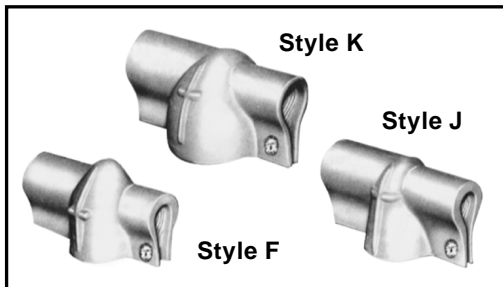


### ORANGE SALCOR<sup>®</sup> STRAIGHT LINE HOSE

| Part     | ASTM  |       | Length | Approx. Weight |
|----------|-------|-------|--------|----------------|
|          | Class | I.D.  |        |                |
| OR125-45 | 2     | 1.25" | 4.5'   | 6 lbs.         |
| OR125-6  | 2     | 1.25" | 6'     | 7.5 lbs.       |
| OR150-45 | 3     | 1.5"  | 4.5'   | 7 lbs.         |
| OR150-6  | 3     | 1.5"  | 6'     | 9.5 lbs.       |

### OR. SALCOR<sup>®</sup> CONNECTOR END LINE HOSE

| Part      | ASTM  |       | Length | Approx. Weight |
|-----------|-------|-------|--------|----------------|
|           | Class | I.D.  |        |                |
| OR125-45C | 2     | 1.25" | 4.5'   | 5 lbs.         |
| OR125-6C  | 2     | 1.25" | 6'     | 6.5 lbs.       |
| OR150-45C | 3     | 1.50" | 4.5'   | 7.5 lbs.       |
| OR150-6C  | 3     | 1.50" | 6'     | 11 lbs.        |



### Insulator Covers

Designed so that the large diameter arm can overlap the small arm of the adjoining cover on double arm construction.

These long lasting covers feature the RIB-GRIP<sup>®</sup> Locking System. The flexible rubber ribs securely hold the outer ribs of its corresponding Conventional Line Hose, even on sagging lines.

| Part | Class | Color  | For Use With Insulator Class | For Use With Line Hose | Length | Width |
|------|-------|--------|------------------------------|------------------------|--------|-------|
| OFRG | 2     | Orange | 55-1/2/3                     | 1"                     | 14.5"  | 5"    |
| OJRG | 2     | Orange | 55-4                         | 1"                     | 16"    | 6.5"  |
| OKRG | 3     | Orange | 55-5                         | 1.25" and 1.5"         | 16"    | 8"    |

**TO ORDER CALL: 800-966-3530 OR FAX: 215-357-9193**